

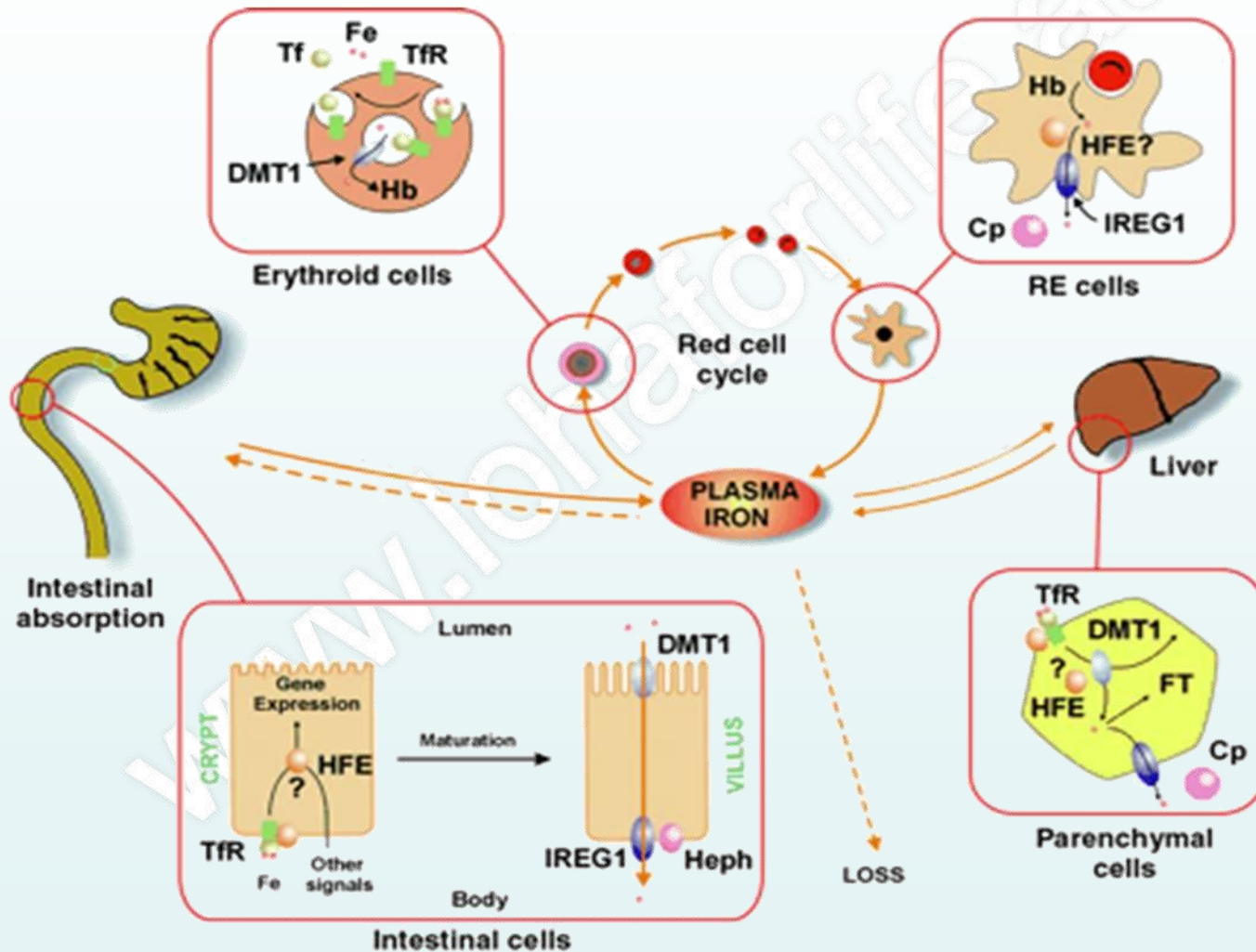


Eisenmetabolismus

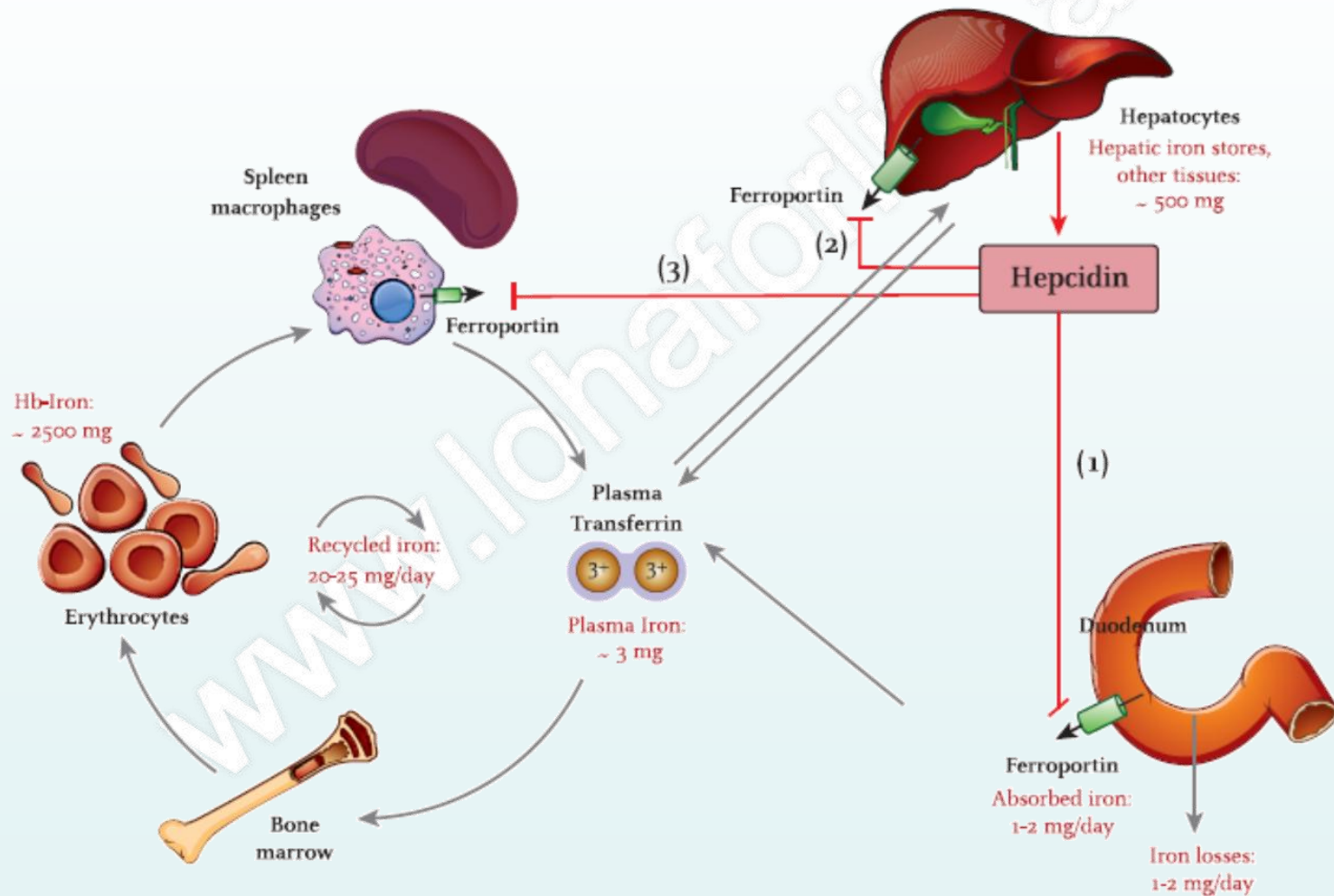
Loha for Life, Med. Kompetenzzentrum Eisenmangel

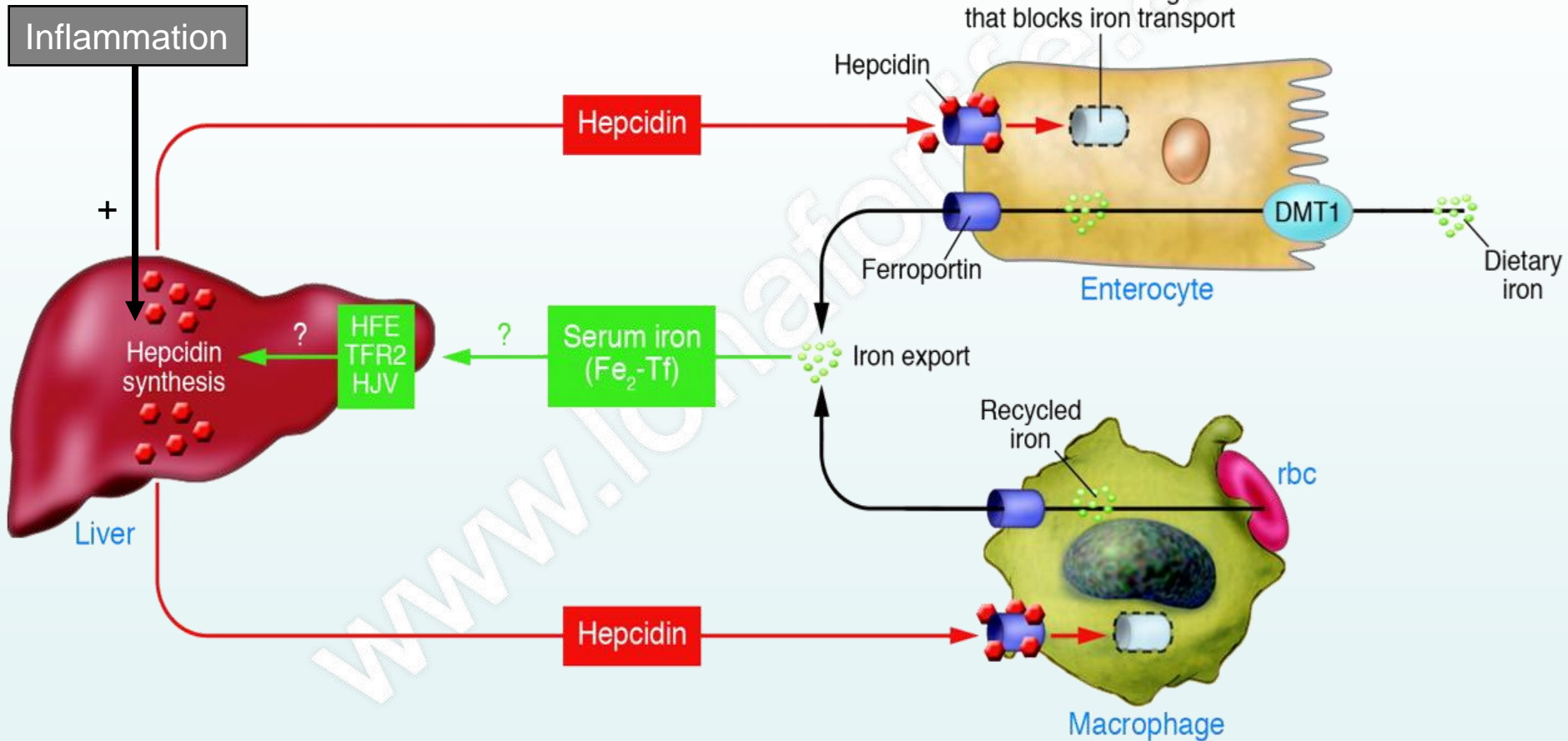
www.lohaforlife.at

Eisenresorption und Verteilung



Hepcidin: Der Hauptregulator





Semrin G, *IBD* 2006
Nemeth E, *Science* 2004
Vaulont S. *J Clin Invest* 2005

Eisenabhängige Signalwege

